



**MARKETING
MATERIALS**
— CATALOGUE —

TABLE OF CONTENTS

PRINTED MATERIAL	3-7
Catalogues	3
Brochures	3
Stickers & POP	4-5
Posters	6-7
KITS & SAMPLES	8
DISPLAYS	9-24
Travelling Tub Door Display Racks.....	9
Travelling Shower & Tub Door Display Racks.....	10
Travelling Shower & Tub Display Racks - End Options.....	11
Multi Display	12
Freestanding In-line Single Shower Displays.....	13
Freestanding 2 Sided Single Shower Displays.....	14
Freestanding Corner Single Shower Displays	15
Mini Shower Doors Display	16
Shower Base Displays.....	17-18
Mini Tubs Displays.....	19
Wall-mounted Luna Display.....	20
Luna Stak Vanities Display	21
Wall-mounted Veritas Niche Displays.....	22
Drain Displays	23
Fibo Flex by Fleurco Wall System Display	24
PROMOTIONAL ITEMS	25

PRINTED MATERIAL

CATALOGUES



Shower Doors, Bases, Fibo by Fleurco, Accessories, Luna collection & Bathtubs

Empty Binder

QTY per case: 24

[MM-FLBINDER](#)

Catalogue Inserts

QTY per case: 5

CA-EN: [MM-INS-CAN23-24](#)

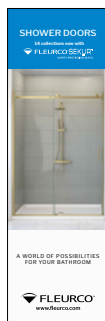
CA-FR: [MM-INS-FR23-24](#)

US-EN: [MM-INS-US23-24](#)

BROCHURES

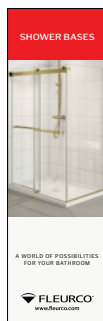
Shower Doors

[MM-LEAFLET-DOORS-22-ENG](#)



Shower Bases

[MM-LEAFLET-BASE-22-ENG](#)



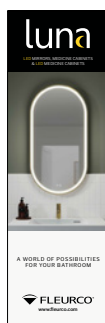
Bathtubs

[MM-LEAFLET-TUBS-ENG](#)



Luna Mirrors & Medicine Cabinets

[MM-LEAFLET-LUNA-ENG](#)



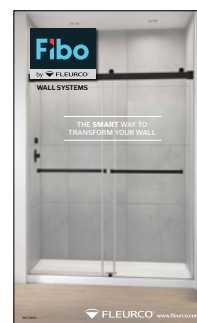
Luna Vanities

[MM-LEAFLET-VANITIES-ENG](#)



Fibo by Fleurco Wall Systems

[MM-BROCHURE-FIBO-ENG](#)



PRINTED MATERIAL

STICKERS & POP

Fibo by Fleurco Transfer Sticker 4 2/5" x 2 1/4"

MM-FIBO-STICKER



Microtek® Clear Sticker 6 1/2" x 4 3/4"

MM-MICROTEK2-STICKER-EN

The Microtek logo, featuring a circular pattern of black dots of varying sizes to the left of the word "Microtek" in a bold, black, sans-serif font. Below it is the Fleurco logo and the word "FLEURCO" in a smaller, black, sans-serif font.

GLASS SURFACE PROTECTION

- Repels water and resists stains from soap scum build-up
- Easy to clean - eliminates the need for harsh abrasives
- Antibacterial properties
- 10 year warranty

www.fleurco.com

FleurcoSEKUR+ Sticker 6 1/4" x 2 1/4"

MM-SEKUR-STICKER

INCLUDES

The FleurcoSEKUR+ logo, featuring a stylized diamond shape to the left of the text "FLEURCO™SEKUR+" in a bold, black, sans-serif font. Below it is the text "SAFETY PROTECTION (S.R.T.)" in a smaller, black, sans-serif font.

To learn more, visit www.fleurco.com/SRT

FleurcoSEKUR+ Clear Sticker 7" x 3 1/2"

MM-SEKURG-STICKER-EN

The FleurcoSEKUR+ logo is displayed on a background of cracked glass. The logo consists of a stylized diamond shape to the left of the text "FLEURCO™SEKUR+" in a bold, black, sans-serif font. Below it is the text "SAFETY PROTECTION (S.R.T.)" in a smaller, black, sans-serif font.

ASK US ABOUT IT

www.fleurco.com/SRT


PRINTED MATERIAL

STICKERS & POP

Luna Medicine Cabinets POP 6 4/5" x 6 3/5"

MM-POP-MED-CABINET-EN

PLACEMENT OF POP



MEDICINE CABINETS

FEATURES

- Copper-free mirror
- Choice of flat or beveled edges
- Wall mounted or recessed installation (surface mount kit included)
- Soft-close door with Blum hinges
- 8mm, ultra clear adjustable glass shelves (additional glass shelves sold separately)
- Available in single view, bi-view and tri-view in multiple sizes


5 year limited warranty

FLEURCO® www.fleurco.com

Luna Lighted Mirrors POP 6 4/5" x 6 3/5"

MM-POP-LIGHTED-MIRROR-EN

PLACEMENT OF POP



LIGHTED MIRRORS

FEATURES

- Energy-efficient LED warm white light, suitable for makeup application and shaving
- Copper-free and distortion-free mirror
- De-fogger included (excluding wardrobe mirrors)
- Safety film backing
- ON-OFF switch easily located and compatible with a wall dimmer
- Different models available in multiple configurations

5 year limited warranty


UL CERTIFIED

FLEURCO® www.fleurco.com

Horizon & Skyline 6 3/4" x 11"

MM-POP-HORIZONSKYLINE-ENG

HORIZON SKYLINE



CHOOSE YOUR STYLE

- Space saving, frameless sliding door & fixed panel
- 5/16" (8 mm) clear safety tempered glass
- Detachable bottom guide to facilitate maintenance
- UV bonded door magnets ensure a water-tight seal
- Available configurations: In-line, 2 sided & tub
- Available finishes: Chrome, brushed nickel & matte black
- Available heights: 75", 79" & 86"

Microtek® 10 year limited warranty

FLEURCO® www.fleurco.com

FL Connect 7" x 5"

MM-FLCONNECT-STICKER

FLEURCOconnect

FREESTANDING TUB INSTALLATION MADE EASY



#1 SOLUTION

- A fast and easy way to install a freestanding tub
- Less installation time
- Ideal for tight spaces with minimum access
- Easy access for repairs

DFC

FLEURCO® www.fleurco.com

PRINTED MATERIAL

POSTERS

Gemini Plus 36" x 24" MM-POSTER-GEM



Latitude Pivot 36" x 24" MM-POSTER-LATPIVOT



Elera 36" x 24" MM-POSTER-ELERA



Novara Plus 36" x 24" MM-POSTER-NOVPLUS



Select Platinum Lexus 36" x 24" MM-POSTER-LEXUS



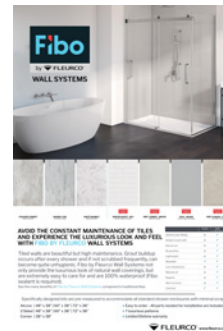
Apollo 36" x 24" MM-POSTER-APOLLO



Walk-in Showers 36" x 24" MM-POSTER-WALKIN



Fibo by Fleurco 24" x 36" MM-POSTER-FIBO-EN



Please contact the Marketing Department for product availability.
Marketing catalogue last modified 2024-04-18

PRINTED MATERIAL

POSTERS

Aria 36" x 24" MM-POSTER-ARIA



Opus 36" x 24" MM-POSTER-CABALETTA



Aria Stone 36" x 24" MM-POSTER-ARIASTONE



KITS & SAMPLES

Microtek® Sample

MM-MICROTEK-SAMPLE



Finishes Sample Kit

MM-FIN-SAMPLE-KIT



Tavia Solid Surface Samples

6 1/2" W x 6 1/8" H x 7 1/8" D

DSP-TAVIA-BOX



Aria Stone Solid Surface Samples

6 1/2" W x 6 1/8" H x 7 1/8" D

DSP-ARIASTONE-BOX



Luna Artus Frame Samples

6 1/2" W x 6" H x 1/2"

DSP-ARTUS-TRIMS



DISPLAYS

TRAVELLING TUB DOOR DISPLAY RACKS



Choose up to 5 tub doors*

*The travelling racks hold 5 tub doors of 60" in width, for optimal results we recommend 4 doors.

Optional display ends (choose up to 2)

Elera Single Pivot Door
[ELEP23-_-40-79†](#)

Aria Mini Tubs Display
 (add 13" to width)

Opus Mini Tubs Display
 (add 8" to width)

Select Kara Single Pivot Door
 (add 6" to width)
[PKT24-_-40-79†](#)

†Available finishes:

[11](#) (Chrome)

[25](#) (Brushed Nickel)

[33](#) (Matte Black)

See page 11 for more information on display end options

DOOR WIDTH	DISPLAY CODE	DESCRIPTION	DIMENSIONS
60"	WHDENFTD	White display rack without display end	62 ¾" W x 29" D x 89" H
	BLKDENFTD	Black display rack without display ends	62 ¾" W x 29" D x 89" H
	WHDENFTD-1	White display rack with 1 display end	62 ¾" W x 29" D x 89" H
	BLKDENFTD-1	Black display rack with 1 display end	62 ¾" W x 29" D x 89" H
	WHDENFTD-2	White display rack with 2 display ends	62 ¾" W x 29" D x 89" H
	BLKDENFTD-2	Black display rack with 2 display ends	62 ¾" W x 29" D x 89" H

Please contact the Fleurco Order Desk for pricing information.
 Display racks cannot be shipped assembled.
 Marketing catalogue last modified 2024-04-18

DISPLAYS

TRAVELLING SHOWER & TUB DOOR DISPLAY RACKS



Choose up to 5 doors*

*The travelling racks hold 3 tub doors and 2 shower doors of 48" or 60"

Optional display ends (choose up to 2)

Elera Single Pivot Door

[ELEP23-_-40-79†](#)

Aria Mini Tubs Display (add 13" to width)

Opus Mini Tubs Display (add 8" to width)

Select Kara Single Pivot Door (add 6" to width)

[PKT24-_-40-79†](#)

†Available finishes:

[11](#) (Chrome)

[25](#) (Brushed Nickel)

[33](#) (Matte Black)

See page 11 for more information on display end options

Tubs not included.

DOOR WIDTH	DISPLAY CODE	DESCRIPTION	DIMENSIONS
48"	WHDHTDSD-3	White display rack with 0, 1 or 2 display ends.	51" W x 29" D x 89" H**
	BLKDHTDSD-3	Black display rack with 0, 1 or 2 display ends.	51" W x 29" D x 89" H**
60"	WHTMTDSD-1	White display rack with 1 display end.	67" W x 29" D x 89" H
	BLKMTDSD-1	Black display rack with 1 display end.	67" W x 29" D x 89" H
	WHTMTDSD-2	White display rack with 2 display ends.	71" W x 29" D x 89" H
	BLKMTDSD-2	Black display rack with 2 display ends.	71" W x 29" D x 89" H
	WHDHTDSD-4†	White display rack with 0, 1 or 2 display ends.	63" W x 29" D x 78" H**
	BLKDHTDSD-4†	Black display rack with 0, 1 or 2 display ends.	63" W x 29" D x 78" H**

†These racks cannot accommodate 79" tall shower doors. Display height is lower than other models.

**Dimensions without display ends.

Please note that adding a mini tub display to the ends will increase the length by approximately 12".

Please contact the Fleurco Order Desk for pricing information.
Display racks cannot be shipped assembled.
Marketing catalogue last modified 2024-04-18

DISPLAYS

TRAVELLING SHOWER & TUB DISPLAY RACKS - END OPTIONS

Elera Pivot Shower Door

ELEP23-_-40-79†



Select Kara Pivot Door

PKT24-_-40-79†



†Available finishes: 11 (Chrome), 25 (Brushed Nickel), 33 (Matte Black)

Aria Mini Tub Display* 25" x 75"

ARDSD-2



Opus Mini Tub Display* 25" x 75"

OPDSD-2



*See page 19 for ordering information

Please contact the Fleurco Order Desk for pricing information.
Display racks cannot be shipped assembled.
Marketing catalogue last modified 2024-04-18

DISPLAYS

MULTI DISPLAY

4 in-line shower doors

Area to attach mirrors, medicine cabinets or accessories displays on both sides

Optional wheels

Select:

4 in-line shower doors

Veritas niche display (see page 22)

2 Luna LED mirrors, medicine cabinets or LED medicine cabinets



BLKDSP-MULTI-60



WHDSP-MULTI-60

DOOR WIDTH	PRODUCT CODE	DESCRIPTION	DIMENSIONS*
48"	WHDSP-MULTI-48	White multi display	54" W x 29" D x 89" H
	BLKDSP-MULTI-48	Black multi display	54" W x 29" D x 89" H
60"	WHDSP-MULTI-60	White multi display	66" W x 29" D x 89" H
	BLKDSP-MULTI-60	Black multi display	66" W x 29" D x 89" H

*99 3/16" height with wheels

Please contact the Fleurco Order Desk for pricing information.
Display racks cannot be shipped assembled.
Marketing catalogue last modified 2024-04-18



DISPLAYS

FREESTANDING IN-LINE SINGLE SHOWER DISPLAYS

In-line 48" x 36"

50" W x 38" D x 86" H

In-line 60" x 36"

62" W x 38" D x 86" H

STEP 1: Choose wood for display

White: [WHDSP-INL](#)

Black: [BLKDSP-INL](#)

STEP 2: Choose in-line door 48" or 60"

Refer to Shower Doors section in catalogue

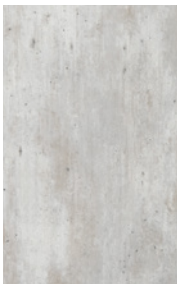
STEP 3: Choose base 48" or 60" (match to selected door size)

Refer to Bases booklet in catalogue

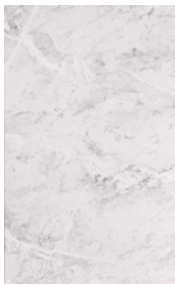
STEP 4: (CAD ONLY) Choose Fibro by Fleurco Wall System



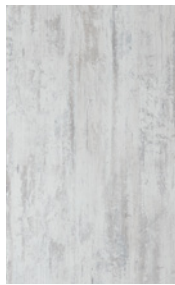
CRACKED CEMENT
2204
(SMOOTH FINISH)



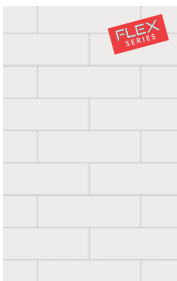
WHITE MARBLE
2273
(SMOOTH FINISH)



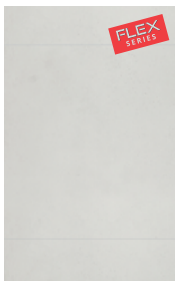
SHABBY CHIC
2898
(TEXTURED FINISH)



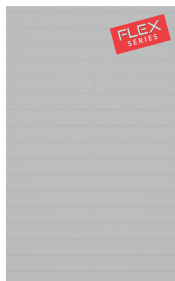
DENVER WHITE
(M74) 3091
(GLOSSY SMOOTH FINISH)



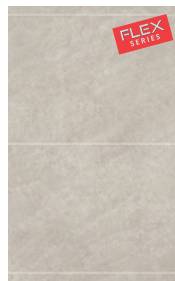
GREY CEMENT
(M6060) 2145
(SMOOTH FINISH)



OSLO
(M3005) 4063
(GLOSSY SMOOTH FINISH)



GREY SAHARA
(M6040) 4746
(TEXTURED FINISH)



Please contact the Fleurco Order Desk for pricing information.
Display racks cannot be shipped assembled.
Marketing catalogue last modified 2024-04-18

DISPLAYS

FREESTANDING 2 SIDED SINGLE SHOWER DISPLAYS

2 Sided 48" x 36"

50" W x 38" D x 86" H

2 Sided 60" x 36"

62" W x 38" D x 86" H

STEP 1: Choose wood for display

White: [WHDSP-INLRP](#)

Black: [BLKDSP-INLRP](#)

STEP 2: Choose 2 sided door 48" or 60"

Refer to Shower Doors section in catalogue

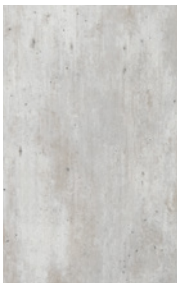
STEP 3: Choose base 48" or 60" (match to selected door size)

Refer to Bases booklet in catalogue

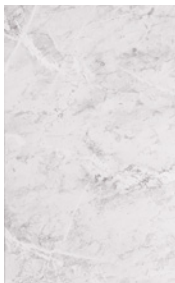
STEP 4: (CAD ONLY) Choose Fibro by Fleurco Wall System



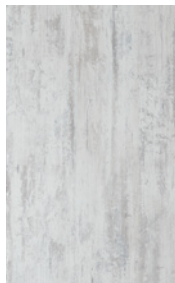
CRACKED CEMENT
2204
(SMOOTH FINISH)



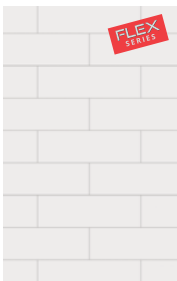
WHITE MARBLE
2273
(SMOOTH FINISH)



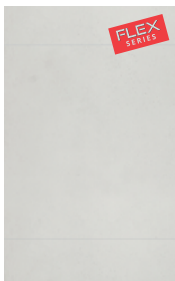
SHABBY CHIC
2898
(TEXTURED FINISH)



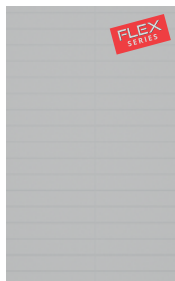
DENVER WHITE
(M74) 3091
(GLOSSY SMOOTH FINISH)



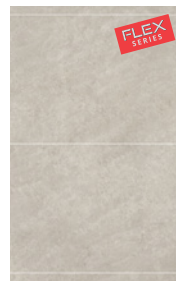
GREY CEMENT
(M6060) 2145
(SMOOTH FINISH)



OSLO
(M3005) 4063
(GLOSSY SMOOTH FINISH)



GREY SAHARA
(M6040) 4746
(TEXTURED FINISH)



Please contact the Fleurco Order Desk for pricing information.
Display racks cannot be shipped assembled.
Marketing catalogue last modified 2024-04-18

DISPLAYS

FREESTANDING CORNER SINGLE SHOWER DISPLAYS

Corner

40" W x 40" D x 86" H

STEP 1: Choose wood for display

White: [WHDSP-CRN](#)

Black: [BLKDSP-CRN](#)

STEP 2: Choose corner door 40" x 40" or less

Refer to Corner Doors section in catalogue

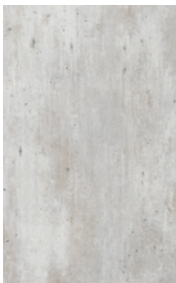
STEP 3: Choose base (match to selected door size)

Refer to Bases booklet in catalogue

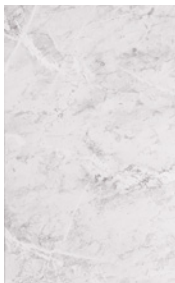
STEP 4: (CAD ONLY) Choose Fibro by Fleurco Wall System



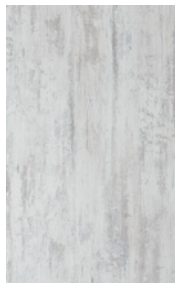
CRACKED CEMENT
[2204](#)
(SMOOTH FINISH)



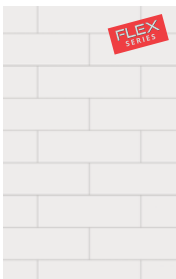
WHITE MARBLE
[2273](#)
(SMOOTH FINISH)



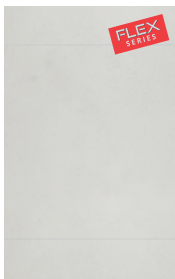
SHABBY CHIC
[2898](#)
(TEXTURED FINISH)



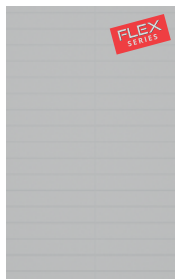
DENVER WHITE
[\(M74\) 3091](#)
(GLOSSY SMOOTH FINISH)



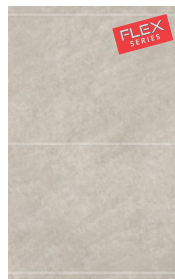
GREY CEMENT
[\(M6060\) 2145](#)
(SMOOTH FINISH)



OSLO
[\(M3005\) 4063](#)
(GLOSSY SMOOTH FINISH)



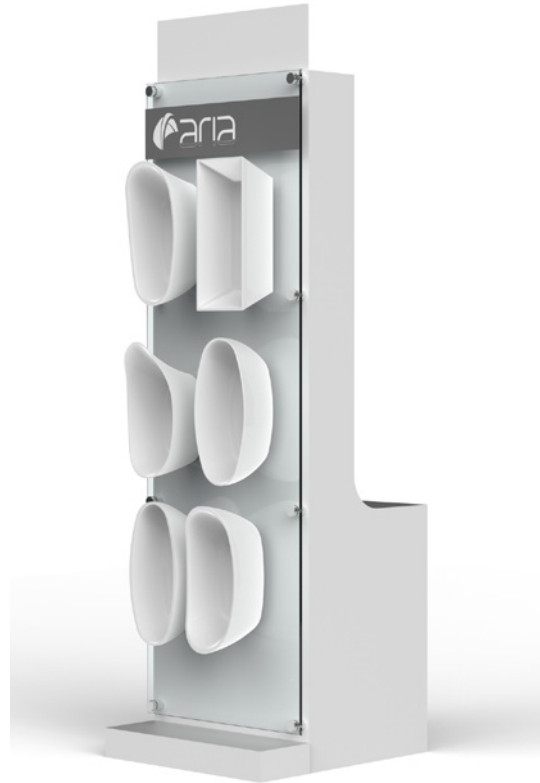
GREY SAHARA
[\(M6040\) 4746](#)
(TEXTURED FINISH)



Please contact the Fleurco Order Desk for pricing information.
Display racks cannot be shipped assembled.
Marketing catalogue last modified 2024-04-18

DISPLAYS

MINI SHOWER DOORS DISPLAY*



Available in white only

[DSP-WHMTD-001](#) - Without tubs

[DSP-WHMTD-002](#) - With tubs

25 1/2" W x 20 5/8" D x 86" H

Choose 3 doors and indicate the position (1, 2 or 3)

Mini Cordoba - Brushed Nickel

Mini Select K2 - Chrome

Mini Novara Plus - Chrome

Mini Platinum (3) only - Chrome

Mini Apollo - Chrome

Mini Pura (3) only - Chrome

Mini Horizon - Brushed Nickel or Matte Black

Mini Skyline - Matte Black

Mini Gemini - Brushed Nickel, Matte Black or Brushed Gold

Mini Latitude - Matte Black

Mini Elera (3) only - Chrome, Brushed Nickel or Matte Black

*Shower doors not included. Wall-mount mini tub display may be added. See page 19.

If ordering a full sized tub and mini tubs at a later date, be sure to order the -002 version of this tower, which has a stabilizing foot added for stability.

Please contact the Fleurco Order Desk for pricing information.

Display racks cannot be shipped assembled.

Marketing catalogue last modified 2024-04-18

DISPLAYS

SHOWER BASE DISPLAYS

Mini Shower Bases Display



Available in white only

[SBPMBD-A](#)

22" W x 28" D x 56" H

Mini bases included (no choices):

Mini Quad (18" x 24") [MINI-ADQ3648-18](#)

Mini Flanged (18" x 24") [MINI-ABF4836-18-3](#)

Mini Neo (18" x 18") [MINI-ALN36-18-B](#)

Mini Linear Drain (18" x 24") [MINI-ABE3648-18-11-B](#)

Aurora Textured Base Display*



[DSP-AURORA-1](#)

24" W x 20 5/8" D x 48" H

*Textured base is included

Choose between 3 textures in Matte Black (Slate, Wood or Stone)

Desired base must be specified when ordering this display

For 48" x 36" bases only

Drain must be secured through frame

Drain **MUST** be ordered with the display for mounting

Choose drain colour (Chrome, Brushed Nickel or Matte Black)

See Bases booklet for base & drain codes

DISPLAYS

SHOWER BASE DISPLAYS

Tavia Solid Surface Base Display*



DSP-TAVIA-1

24" W x 20 5/8" D x 48" H

*Solid surface base is included

Choose between 3 matte finishes (White, Stone Grey or Cocoa), and 2 textures (Slate or Smooth)

Desired base must be specified when ordering this display

For 48" x 36" bases only

Drain must be secured through frame

Drain **MUST** be ordered with the display for mounting

Only Matte Black drain cover is available for Tavia bases

See Bases booklet for base & drain codes

Tavia Sticker 15" x 10"

MM-TAVIA-STICKER-EN



DISPLAYS

MINI TUBS DISPLAYS*

Aria Mini Tubs
Wall-mount Display Panel 25" x 75"



ARDSD-2†



AR-MINITUB-KIT

This mini tub kit includes:

- Mini Verismo
- Mini Calando
- Mini Arpeggio
- Mini Molto
- Mini Octave
- Mini Voce

Opus Mini Tubs
Wall-mount Display Panel 25" x 75"



OPDSD-2†



OP-MINITUB-KIT

This mini tub kit includes:

- Mini Alto
- Mini Libretto
- Mini Concerto
- Mini Rhapsody
- Mini Waltz
- Mini Ossia

*Mini tub displays can also be mounted on a travelling (pages 9-10) or mini shower door (page 16) display rack.

†Mini tubs sold separately. You must order the display panel and the mini tub kit.

DISPLAYS

WALL-MOUNTED LUNA DISPLAY*

2 Sided Wall Mirror Display
36" W x 4" D x 86" H

DSP-LUNA-2



*Mirror not included.

Please contact the Fleurco Order Desk for pricing information.
Display racks cannot be shipped assembled.
Marketing catalogue last modified 2024-04-18

DISPLAYS

LUNA STAK VANITIES DISPLAY

4 Sided Tower Display

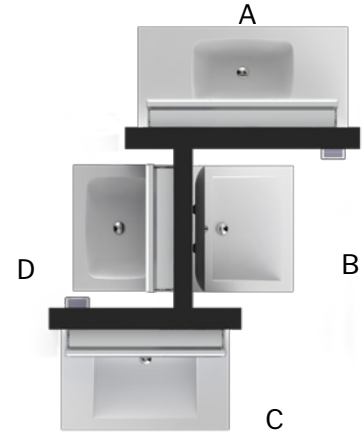
DSP-LUNA-STAK



Front View



Back View



Top View

STEP 1: Order display

White DSP-LUNA-STAK

STEP 2: Order vanities

Choose up to 4 vanities. Refer to Vanities section in the Luna booklet.

WALL	VANITY SIZE
A	39"
B	24"
C	32"
D	24"

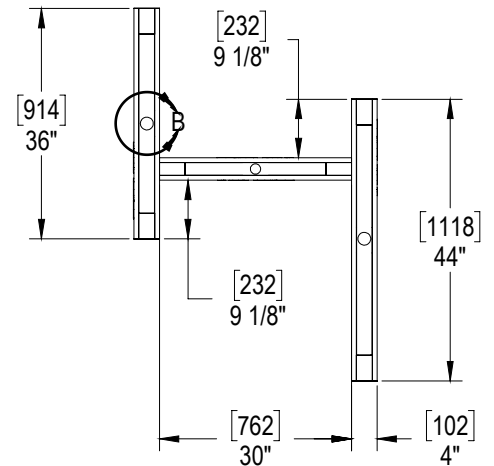
OPTIONAL: Refer to Luna booklet page 60 for decorative drains & pipes.

STEP 3: Order Luna mirror of choice

Refer to the Luna booklet to choose your LED Mirror, Medicine Cabinet or LED Medicine Cabinet.

You must choose a mirror size to match the vanity wall size.

Display dimensions



DISPLAYS

WALL-MOUNTED VERITAS NICHE DISPLAYS*

12" x 12" Niche Display
16" W x 19" H

DSP-NICHE-1



16" x 12" Niche Display
20" W x 19" H

DSP-NICHE-2



24" x 12" Niche Display
28" W x 19" H

DSP-NICHE-3



*Chrome niche included

DISPLAYS

DRAIN DISPLAYS

FleurcoCONNECT Drain 14" W x 14" D x 18 1/2" H

DSP-FLCONNECT-ABS (ABS model)
DSP-FLCONNECT-PVC (PVC model)



Top View



RapidCONNECT® Drain 14" W x 14" D x 11" H

WHDRDCR-ABS-1 (ABS model)
WHDRDCR-PVC-1 (PVC model)
WHDRDCR-CI-1 (Cast Iron model)



Top View



DISPLAYS

FIBO FLEX BY FLEURCO WALL SYSTEM DISPLAY

13 3/4" W x 16 9/10" D x 23 4/5" H
DSP-FIBO-1



PROMOTIONAL ITEMS

Bloc Notes

MM-BLOCNOTE



Notepad & Pen Set

MM-NOTEPAD



Pen

MM-PEN



Tote

MM-TOTEBAGS



Mug

MM-MUG



*Limited quantities available